



SUPPORT RESEARCH LED CONSERVATION

with the *Nigerian Montane Forest Project*



**UNIQUE
NIGERIAN
BIODIVERSITY
RESEARCH
STATION**



36
Full-time staff
employed locally



Embedded within the
community for 16 years



Supervised postgraduate
research students



**LOCALLY
LED &
GLOBALLY
CONNECTED**



Contributing to
scientific knowledge



Nigerian undergraduate
IT students hosted



Restoring unique
montane forest



Located in
Taraba State
on the Mambilla
Plateau in
eastern Nigeria



Take a virtual tour to
the research station via
our website [canterbury.
ac.nz/afromontane](http://canterbury.ac.nz/afromontane)



The research station is ideally situated on the edge of biodiverse Ngel Nyaki Forest Reserve.

Nigerian linkages

Lagos State

- University of Lagos (UniLag)
- Nigerian Conservation Foundation (NCF)

Adamawa State

- Modibbo Adama University of Technology, Yola.

Gombe State

- Gombe State University
- Federal University of Kashere

Bauchi State

- Abubakar Tafawa Balewa University

Abuja

- Nigerian Meteorological Institute (NIMET)
- Nigeria National Parks (NNP)

Taraba State

- Taraba State University
- Gashaka Gumti Biodiversity Project

Ondo State

- The Federal University of Technology

Plateau State

- University of Jos
- A.P. Leventis Ornithological Research Institute (APLORI)

Oyo State

- Forest Research Institute, IBADAN

Kwara State

- University of Ilorin

Borno State

- University of Maiduguri



The research
station is situated
on the edge of Ngel
Nyaki Forest Reserve

Global linkages

Australia

- University of Queensland

New Zealand

- UC
- Lincoln University
- AgResearch
- Landcare Research
- Plant and Food Research

United Kingdom

- University of Exeter
- University of St Andrews
- Oxford University
- Royal Botanical Gardens, Kew

Brazil

- University of Sao Carlos

France

- Natural History Museum, Paris

South Africa

- University of Kwa Zulu Natal

United States of America

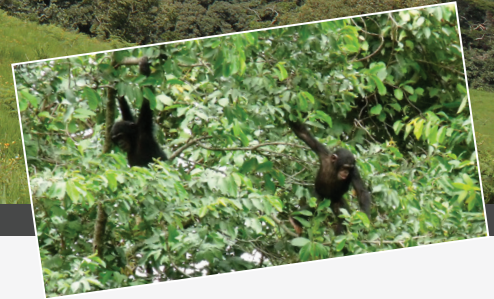
- Smithsonian Institute, Washington

Uganda

- Kibale National Park



Field staff heading into Ngel Nyaki Forest Reserve, home to the rare Nigerian-Cameroon Chimpanzee.



Our location

Ngel Nyaki Forest Reserve on the Mambilla Plateau, Taraba State, is **unique**. It is part of Nigeria's heritage, a biodiversity hot-spot with plants and animals found only in this region. It is rich in primates and home to a population of the rare Cameroon/Nigeria chimpanzee. Thanks to the research station, Ngel Nyaki has become a research base for Nigerian students and established researchers. The success of the Project feeds back into the community with benefits beyond salaries such as schools, health initiatives and small business opportunities.

Read our 2006–19 annual reports on our website canterbury.ac.nz/afromontane



What people say about the project

"The Nigerian Montane Project in Ngel Nyaki forest on the Mambilla Plateau empowers young people, this gives joy."

Amina Mohammed (Deputy Director General of the UN and former Minister of Environment, Nigeria)

"We are all impressed by the breadth, variety and output quality of the Project's research and science... Good news, too, about the extent and effectiveness of your local initiatives and in particular the focus on education and health".

Tasso Leventis (Cambridge Conservation Initiative, UK)

Our history

The origins of the research station can be traced back to the 1970's when Professor Hazel Chapman, Founder and Science Director, lived on the Mambilla Plateau where her father worked as a forest ecologist for the Nigerian Government. Accompanying her father on his expeditions into the remote forests of Taraba and Adamawa States led to the relationship she now has with this unique environment and its local people.

Hazel returned to Nigeria in 2002 with her team from the University of Canterbury, New Zealand, to find out what had happened to these very special forests. This visit, in collaboration with the village, led to the creation of the Project in 2004.

Dr Danladi Umar, a senior academic in Gombe State University and a former PhD student of the Project, took on the Directorship in 2018. Hazel remains as the Science Director.



Project students in ecology at the 2018 University of Canterbury PhD graduation ceremony.

Our aims

We are committed to biodiversity conservation through working hand in hand with local communities.

We actively pursue FOUR primary objectives, all of which can be linked to the United Nation's Sustainable Development Goals.



Enhance biodiversity and reduce climate change

- Forest conservation
- Forest regeneration
- Patrolling for poachers
- Protecting threatened plants and animals
- Building capacity for sustainable livelihoods



Connect Nigerians to global conversations

- Facilitating research and building collaborations
- Supporting Nigerian students to attend international professional development opportunities
- Producing globally competitive work ready graduates



Create employment and reduce poverty

- Non-gender based employer
- Supporting the establishment of small community businesses
- Fostering peace by employing staff from farming and herding communities



Improve community education and reduce inequalities

- Built a community school
- Sourced funding for girls education initiative
- Supporting women to gain skills for employment

Undergraduate Industrial Training (IT) students undertaking their six month placement at the research station in 2017.





Ways to support us

Due to the changed global environment this year the research station has lost some key sponsors.

Without new support we will be forced to close and Nigeria will lose this unique opportunity and the forest.

However with your support we can continue and grow.

Sponsorship opportunities



Platinum

US\$150,000 p.a. this anchor sponsor will allow the research station to continue to operate



Gold

US\$50,000 p.a. for research station ongoing capital works, maintenance upgrades and equipment costs



Silver

US\$20,000 p.a. for forest protection and restoration



Bronze

US\$10,000 p.a. for staff development



Increase capacity

We host undergraduate students for their six month internship each year. With a donation of **US\$100,000** we will build a hostel for 40 students. Which will enable us to accept double the number of student applicants.



Ensure a sustainable future

We have a business plan for the establishment of a bee keeping venture which will allow the research station to become self funding and provide small business opportunities for the local community. For this to succeed from forest-to-supermarket we need **US\$200,000**.



Kickstart a career

We would greatly benefit from a permanent early career scientist position. They would oversee ongoing research, forest regeneration and aid in data analysis and knowledge dissemination. This position would require funding of **US\$14,000 per annum**.

Nigerian Montane Forest Project, School of Biological Sciences
University of Canterbury, Te Whare Wānanga o Waitaha, New Zealand
Email: hazel.chapman@canterbury.ac.nz
Project website: canterbury.ac.nz/afromontane
Chapman Lab website: hazelchapman.com

UC  **SCIENCE**